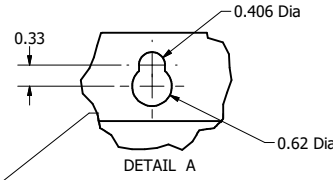
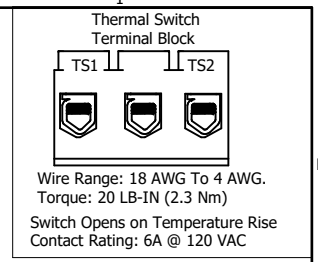
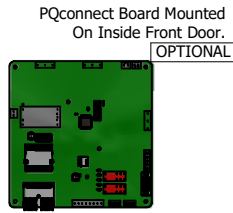
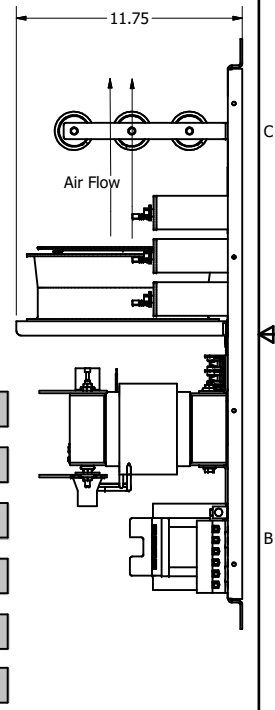
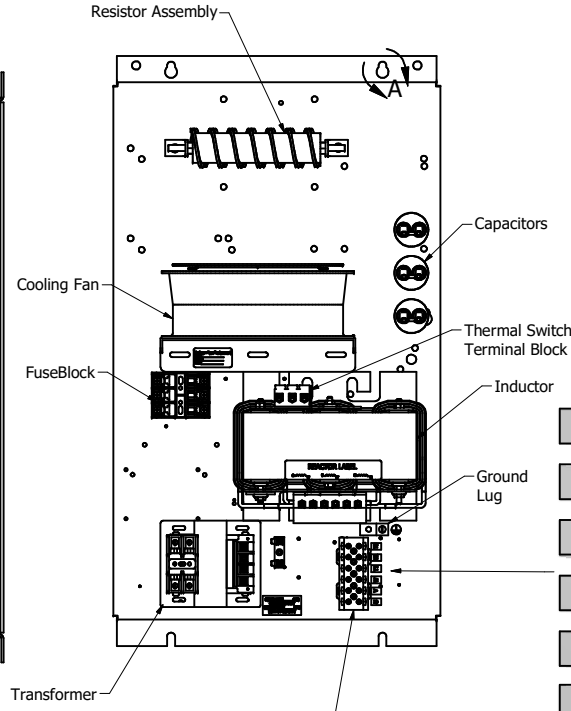
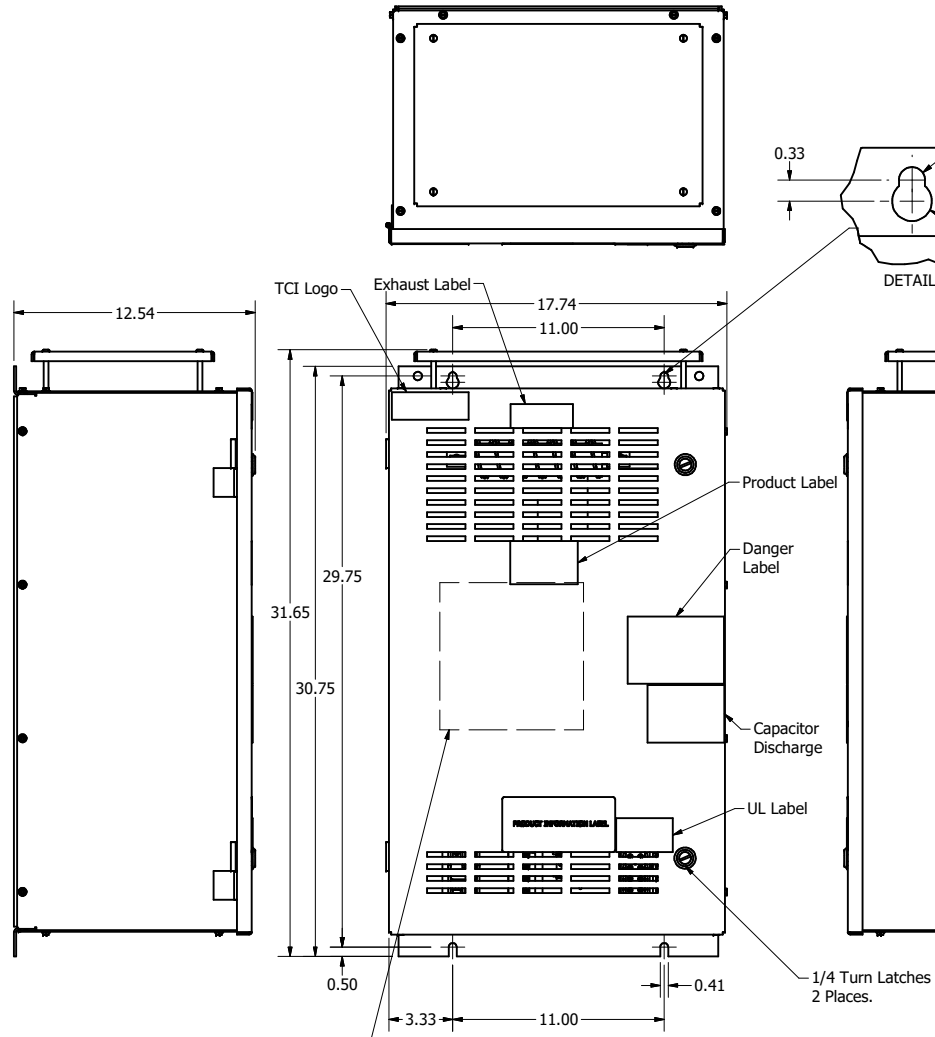


SineWave Part Number	Schematic Drawing#	Approx Weight (LBS)
KMG55A01A	24281-1A	169
KMG55A01P	24281-1P	170

HorsePower (HP)	kVar	Max Amps	Voltage (V)	HZ	Phase
40	3	55	480	60	3



D  
C  
B  
A



**Power Block Connections**  
Wire Range -1 AWG to #22 AWG  
1 AWG to 4 AWG: Torque 35 lbs-in  
6 AWG to 14 AWG: Torque 30 lbs-in  
16 AWG to 20 AWG: Torque 25 lbs-in  
22 AWG: Torque 20 lbs-in

**Ground Lug:**  
Wire Range -1/0 AWG to #14 AWG  
1/0 AWG to 2 AWG: Torque 50 lbs-in  
4 AWG to 6 AWG: Torque 45 lbs-in  
8 AWG: Torque 40 lbs-in  
10 AWG to 14 AWG: Torque 35 lbs-in

Customer Is Responsible For Installation to Meet All National And Local Electrical Codes.

Material(s) Shall be RoHS Compliant

TCI, LLC CLAIMS PROPRIETARY RIGHTS IN THE MATERIAL HEREIN DISCLOSED. IT IS SUPPLIED WITHOUT PREJUDICE TO ANY PATENT RIGHTS OF TCI AND MAY NOT BE REPRODUCED OR USED TO MANUFACTURE ANYTHING SHOWN THEREIN WITHOUT WRITTEN PERMISSION FROM TCI.					TOLERANCES (EXCEPT AS NOTED)	W132 N10611 Grant Drive Germantown, WI 53022  KMG55A01-, SineWave Filter Enclosed Type 1, 40HP, 480V  OWN BY: DSW DATE: 10/07/2014 104355DG SCALE: 1/8 DRAWN: CSE
					DECIMAL	
					.XX ± .25 .XXX ± .10	
					FRACTIONAL	
	B Add PQconnect Board	6/17/2020	DSW		± 1/16	
	NO REVISION				± 1°	